



SUSTAINABILITY ROADMAP

APRIL 2023

HANSENYUNCKEN

A built legacy with sustainability at its heart:
The Council House 2 (CH2) project was piloted in an effort to provide a working example for the local development market. The brief required a building that, as much as possible, relied on passive energy systems while producing a premium grade building. It was the first new commercial office building in Australia to meet and exceed the 6 Star Green Star rating system administered by the Green Building Council of Australia.



INTRODUCTION



We acknowledge the Traditional Custodians of Country throughout Australia and recognise their continuing connection to land, waters and culture. We pay our respects to Elders past, present and emerging.

Sustainability is important to us. Having built for over 100 years, we are aware of the legacy of building and the consequence of our actions. Our projects have a material impact on people, communities and climate.

Our purpose, *Driven by challenge, built with pride, **for sustainable impact*** reflects our values. Embracing our responsibility, we've developed this sustainability roadmap to guide our actions and help us achieve our sustainability commitments.

A handwritten signature in blue ink, appearing to read 'Peter Salveson', with a long horizontal flourish extending to the right.

Peter Salveson
Chief Executive Officer
Hansen Yuncken Pty Ltd



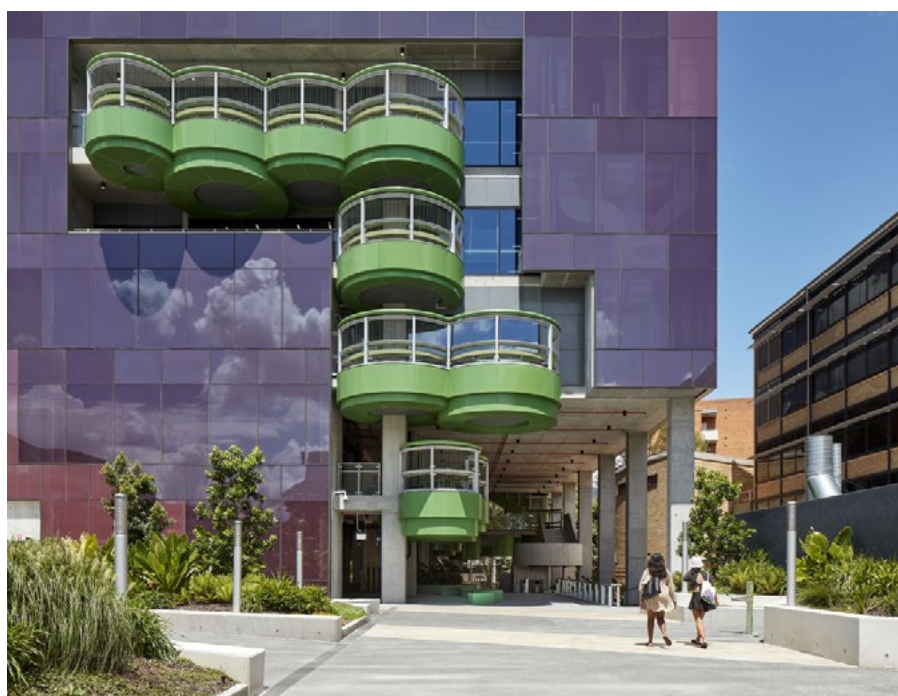
Engineering a better world: A true product of collaboration, this vibrant hub for industry and interdisciplinary collaboration will address global challenges in areas such as energy, water and sustainable manufacturing.

We are driven by the challenge to build for a better planet.

We are committed to building with pride – creating healthy spaces that improve people’s lives and positively impact communities.

As the construction partner on projects, our role is to consider the whole life cycle of building projects and use our voice to influence sustainability outcomes while delivering on project commitments.

Our values as a privately owned Australian business help us drive sustainable impact. With commitments in place across our three areas of focus; climate, local impact and health, we are turning our ambition into action.



Left: University of Queensland's Andrew N. Liveris Building, 2022. Home to the University's chemical engineering department, its design interweaves history and forward focus to reflect the culture of open collaboration. The building's glass facade ties the sandstone of the University's Great Court and the chemical engineering processes explored inside. Building up rather than out has left a significant proportion of the site as green space, a rare commodity on campus. Photo: Christopher Frederick Jones

Driven by challenge built with pride for sustainable impact

Directly connected to our corporate purpose -
it's how we do business.

We build for sustainable impact because we
operate in a high impact industry, impacting
people, communities and planet.

We recognise this and commit to creating
positive impact.



Left: Victorian Pride Centre, 2022. First of its kind in Australia, the Victorian Pride Centre holds, within its 6,200m² footprint, symbolic and safe space for members of the LGBTIQ+ communities. High performance glazing and an exposed structure demonstrate sustainability in design, minimising material use and maximising energy efficiency. Photo: John Gollings

SUSTAINABILITY ROADMAP

1 INTENTION

**Driven by Challenge,
Built with Pride
for Sustainable Impact**

At Hansen Yuncken, we are driven by the challenge to build for a better planet. We are committed to building with pride – creating healthy spaces that improve people’s lives and positively impact communities.

As the construction partner on projects, our role is to consider the whole life cycle of building projects and use our voice to influence sustainability outcomes while delivering on project commitments.

Our values as a privately owned Australian business help us drive sustainable impact. With commitments in place across our three areas of focus; climate, local impact and health, we are turning our ambition into action.

Local Impact

We build and operate with our communities in mind, making a difference through Indigenous reconciliation, ethical procurement, local community initiatives and employment opportunities for underrepresented groups.

We commit to responsible and sustainable supply chains that aim to mitigate modern slavery risks

We commit to increasing employment opportunities for underrepresented groups

We commit to identifying opportunities to invest in local initiatives to deliver social benefits in the communities in which we work

2 ACTION

Climate

We are committed to minimising the environmental impact of our operations and building projects through electrification and emissions reduction initiatives.

We commit to conducting a scope 1 and 2 carbon footprint assessment

We commit to optimising material usage and minimising waste sent to landfill

We commit to trialing the electrification of our construction equipment

We commit to working with clients to promote low carbon solutions in projects

Health

The spaces we spend time in significantly impact us as human beings. We aim to build healthy buildings while providing a safe workplace where wellbeing is prioritised and our employees feel empowered to grow.

We innovate to deliver sustainable designs and construction outcomes that enhance human health and wellbeing

Through our Work Differently framework, we commit to providing a safe workplace where employees feel cared for, empowered and enabled

We commit to supporting our employee’s mental health and wellbeing

3 VALUES

INCLUSIVE

Think and act with an open, inclusive and National mindset

RIGOUR

Our love of challenge fuelled by curiosity, critical thinking and attention to detail, makes a difference

RESPONSIBILITY

Our broader view encompasses ‘for the good of all’; we value people, wellness and community

ACCOMPLISHED

Our commitment to excellence through collaboration, allows us to take pride in our achievements, both personal and commercial



"This is the first certified 6 Star Green Star - Design and As Built project in regional NSW and with innovation at its core from the outset, it certainly sets the benchmark for future developments of this kind."

Davina Rooney, Chief Executive Officer - Green Building Council of Australia

Photo: Murray McKean

CLIMATE

We are committed to minimising the environmental impact of our operations and building projects through electrification and emissions reduction initiatives.

1. We commit to conducting a scope 1 and 2 carbon footprint assessment.
2. We commit to optimising material usage and minimising waste sent to landfill.
3. We commit to trialling the electrification of our construction equipment.
4. We commit to working with clients to promote low carbon solutions in projects.

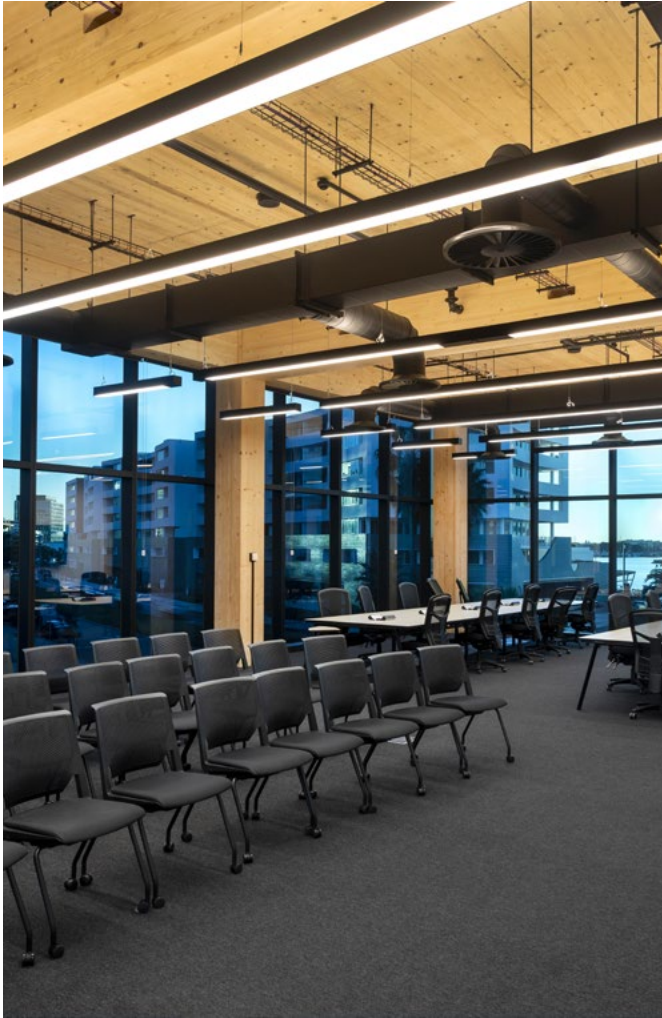
OUR CLIMATE COMMITMENTS

COMMITMENTS

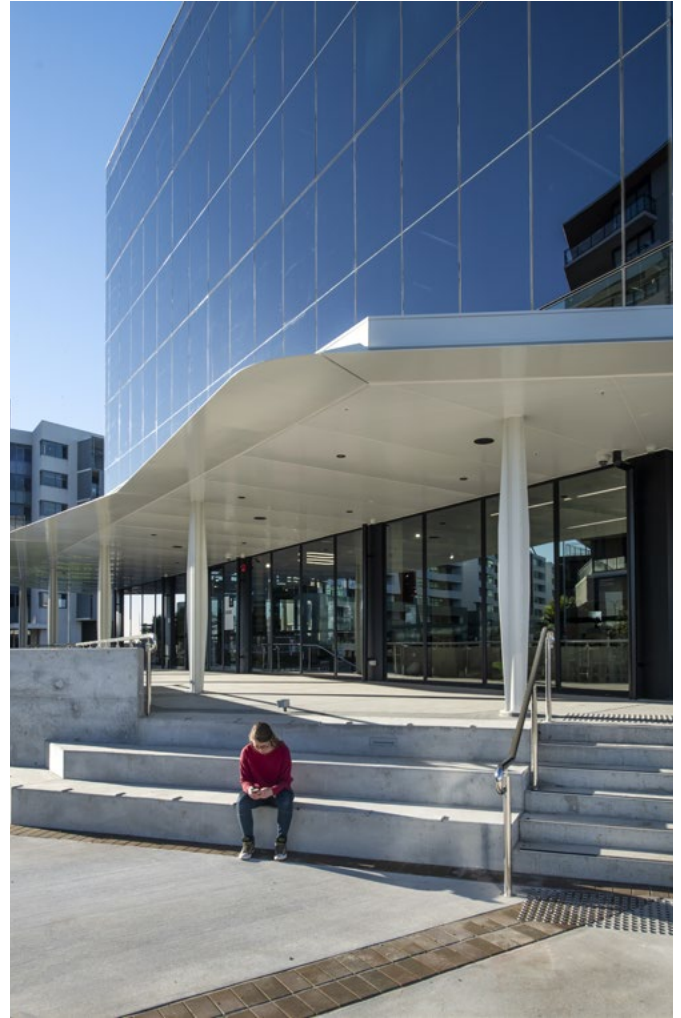
<p>1. We commit to conducting a scope 1 and 2 carbon footprint assessment.</p>	<p>To fulfil our commitment toward climate, we lean into our sphere of influence on and off site - blending our proactive approach to identify sustainable solutions, while supporting our clients to bring these ideas to life at the project level.</p>
<p>2. We commit to optimising material usage and minimising waste sent to landfill.</p>	<p>We inherently respect the land on which we operate, continuously seeking methods to reduce our impact. From repurposing materials on some of Australia's most historical, heritage listed sites, to carefully considered materials selection on cutting edge health and education facilities.</p>
<p>3. We commit to trialling the electrification of our construction equipment.</p>	<p>The Flinders University Health and Medical Research Building project team has embraced recycling and sustainability through several channels; a sitewide colour coded recycling scheme, plasterboard recycling program, air tightness on blockwork that exceeds specification, regular 'site clean up days' and a dedicated bike storage area to encourage cyclists to commute.</p>
<p>4. We commit to working with clients to promote low carbon solutions in projects.</p>	<p>Our presence on and off site has a tremendous impact on the surrounding environment. The effectiveness which depends on our approach towards embracing and implementing small initiatives that together, have a lasting impact.</p>



Left: Hansen Yuncken has partnered with Dulux to participate in Project Earth, an initiative designed to encourage recycling plastic paint containers. Used paint containers will be repurposed into paint trays and stirring sticks for continuous circulation. The recycled trays will be gifted to the Flinders University maintenance team upon handover of the project.



**UNIVERSITY OF NEWCASTLE
Q BUILDING
HONEYSUCKLE CAMPUS, NSW**



The first project in regional NSW to receive a 6 Star Green Star certification, this project represents global leadership in sustainability.

The building is a mass timber construction and features a concrete core. The remainder of the internal structure has been built with Cross Laminated Timber (CLT) and is the first multi storey timber building in the steel city. The timber structure captures carbon, as opposed to producing it.

The eastern, northern and western facades of the building have been glazed with an electrochromic smart-glass system called Sage Glass, which automatically changes its tint to respond to heat and glare. The 344 Sage Glass panels is recognised as the largest installation in the southern hemisphere. The building has 104 solar panels installed upon its roof and has a rainwater capture volume of 20 kilolitres.



Image: Meadowbank TAFE Multi-Trades and Digital Technology Hub Smoking Ceremony

LOCAL IMPACT

We build and operate with our communities in mind, making a difference through Aboriginal and Torres Strait Islander reconciliation, ethical procurement, local community initiatives and employment opportunities for underrepresented groups.

1. We commit to responsible and sustainable supply chains that aim to mitigate modern slavery risks.
2. We commit to increasing employment opportunities for underrepresented groups.
3. We commit to identifying opportunities to invest in local initiatives to deliver social benefits in the communities in which we work.

LOCAL IMPACT COMMITMENTS

COMMITMENTS

<p>1. We commit to responsible and sustainable supply chains that aim to mitigate modern slavery risks.</p>	<p>To fulfil our commitments toward meaningful local impact, a range of actions have been introduced across corporate and project offices. Initiatives focused on procurement, employment and community, surrounding modern slavery, female participation, reconciliation and project specific, local activities to benefit the communities in which we work.</p>
<p>2. We commit to increasing employment opportunities for underrepresented groups.</p>	<p>Last year, members from our Victorian team rolled up their sleeves to clean up and provide building support to deliver 20 extra bedrooms at Melbourne's Lakehouse Project, taking the total to 50 safe spaces for vulnerable people to recover.</p>
<p>3. We commit to identifying opportunities to invest in local initiatives to deliver social benefits in the communities in which we work.</p>	<p>Pop Up Shelters or 'Meanwhile Use' housing refers to re-purposed vacant buildings awaiting redevelopment, which are used to provide transitional accommodation. Housing All Australian's (HAA) first Pop Up Shelter, The Lakehouse in South Melbourne, has already housed more than 106 women with support from YWCA.</p> <p>Described by our HY teammates as "an incredibly rewarding, eye opening experience to be able to participate in The Lakehouse Project clean up - it really demonstrates who Hansen Yuncken is as a business, putting our hands up to support this really important initiative for vulnerable people."</p>



Left: Many hands make light work at the Housing All Australians Lakehouse Project Clean Up Day - a project aimed to provide safe spaces for vulnerable women located in Melbourne, through repurposing vacant buildings.

Right: Inspiring the future by hosting the Property Council of Australia's 'Girls in Property' program at our Meadowbank TAFE project.

Below: Standing tall and proud, our 'Name The Crane' competition winner at our North Melbourne Primary School project.

Below right: Celebrating significant project milestones with local Aboriginal and Torres Strait Islander communities.





Image: University of Queensland Student Services Hub

HEALTH

The spaces we spend time in significantly impact us as human beings. We aim to build healthy buildings while providing a safe workplace where wellbeing is prioritised and our employees feel empowered to grow.

1. We innovate to deliver sustainable design and construction outcomes that enhance human health and wellbeing.
2. Through our Work Differently framework, we commit to providing a safe workplace where employees feel cared for, empowered and enabled.
3. We commit to supporting our employee's mental health and wellbeing.

HEALTH COMMITMENTS

COMMITMENTS

<p>1. We innovate to deliver sustainable design and construction outcomes that enhance human health and wellbeing.</p>	<p>To fulfil our health commitments, we focus on collaborative partnerships - bringing together people, clients and our construction community.</p> <p>While a safe workplace is everyone's entitlement, our 'Many Minds' approach toward exceptional HSEQ is focused on empowerment, beyond words on a policy.</p>
<p>2. Through our Work Differently framework, we commit to providing a safe workplace where employees feel cared for, empowered and enabled.</p>	<p>Hansen Yuncken has recently introduced 'MeTime,' encouraging team members to take an additional three days of leave per year to focus on health and wellbeing activities.</p> <p>By creating an environment that encourages and rewards innovative thinking, combined with safe practices and risk prevention initiatives reaffirms our positive culture across each aspect of our business. We aim to support holistic wellbeing where people feel valued, supported and motivated to bring their best, every time.</p>
<p>3. We commit to supporting our employee's mental health and wellbeing.</p>	<p>By disrupting the conversation, we empower our people to Work Differently and join us on our HSEQ journey. This means great leadership, great conversations and great solutions, for sustainable success.</p>



Left: With the 'Many Minds' at Hansen Yuncken, we aim to Work Differently, experience differently and deliver differently. We believe that everyone's ideas are worthy - which is what makes Hansen Yuncken what we are today. We use our confidence to instil confidence in others and take everyone's ideas, contributions and experience seriously.

Right: Exploring the great outdoors, our team members are encouraged to participate in fundraising initiatives focused on health and wellbeing.



Below: Project stakeholders rallied together to 'Make their Mark for Mental Health' at The Peacock Centre Redevelopment project - a state of the art mental health facility.

Below right: Driven by sustainable design principles, the University of Tasmania's Forestry Building will be restored, with a new life as an inner city knowledge hub.





HANSEN YUNCKEN

